

Dairy Flat Newsletter

November 2025 - Volume 34 Number 4

You can find past issues on the Dairy flat trust website: www.dairyflatcommunitytrust.co.nz and www.wm.nz/my-region/auckland/redvale-energy-park-community-liaison/dairy-flat-newsletter/

Publisher: WM New Zealand Delivered by Silverdale Pony Club

Redvale Energy Park Liaison Committee

Current members:

Andrew McNeil	Tender Road
Angela Parsonage	Dairy Flat Hwy
Bob Gibbs	Richards Road
Elizabeth Singh	Auckland Council
Glen Jujnovich	WM Representative
Katherine Mason	Dairy Flat Representation
Katie Hills	Dairy Flat School Principal
Lloyd Richardson	REPSI
Louise Bentley	Auckland Council
Lisa Whyte	Rodney Local Board Member
Nick de Witte	REPSI
Rhys Hopkins	Horseshoe Bush Road
Tony Cowley	Dairy Flat Representation
Warwick Hojem	Chairman

Committee members are elected by the community or appointed to represent key interest groups.

Meeting minutes are available at the WM New Zealand Ltd office.

Members of the public are welcome to attend and speak at meetings. As a courtesy, please provide at least five days' notice to the Secretary, Tara, by emailing Redvale@wm.nz.

The Committee supports open discussion on landfill operations.
For questions or concerns, contact Reception on 09 427 0600 or your local Liaison Committee member.

Dairy Flat Community Trust

EST. 1993

Current Trustees:

Steven Earwaker	Heather Turley
Treve Kunzli	Barb Stubbs
Elizabeth Mackay-Cotter	Glen Jujnovich
Louise Earwaker	

The Dairy Flat Community Trust is a charitable Trust to administer and distribute monies provided for the Community of Dairy Flat by WM New Zealand Ltd.

Please see our Trust website:

www.dairyflatcommunitytrust.co.nz

Should you have any questions concerning the Trust, please contact:

Secretary – Tara Wiggill - Ph: 09 427 0600 or via email- Dairyflatcommunitytrust@hotmail.co.nz

Faster response to odour concerns Text: 8601

If you notice an odour from Redvale Landfill and Energy Park, there's now a simple and much faster way to let us know.

You can text 8601 with details regarding odour, and our Environmental Analyst will be notified straight away. We'll begin an investigation within 30 minutes – usually much faster. Our Investigations are more effective when given as much information as possible – location, time, character, intensity, and frequency.

This new system ensures your messages are never delayed and allows us to respond quickly every time. We'll check what's happening on site, visit the property where the odour has been reported, and work with our operations team to take any action needed.

The Redvale team work hard every day to manage Auckland's waste safely and sustainably, and odour control is a key part of this. Some of the measures in place include daily cover, odour-neutralising sprays, and keeping the exposed working face of the landfill as small as possible.

We appreciate your support as we continue to invest in systems that protect our local environment and community.

VDI scale for reporting an odour complaint.

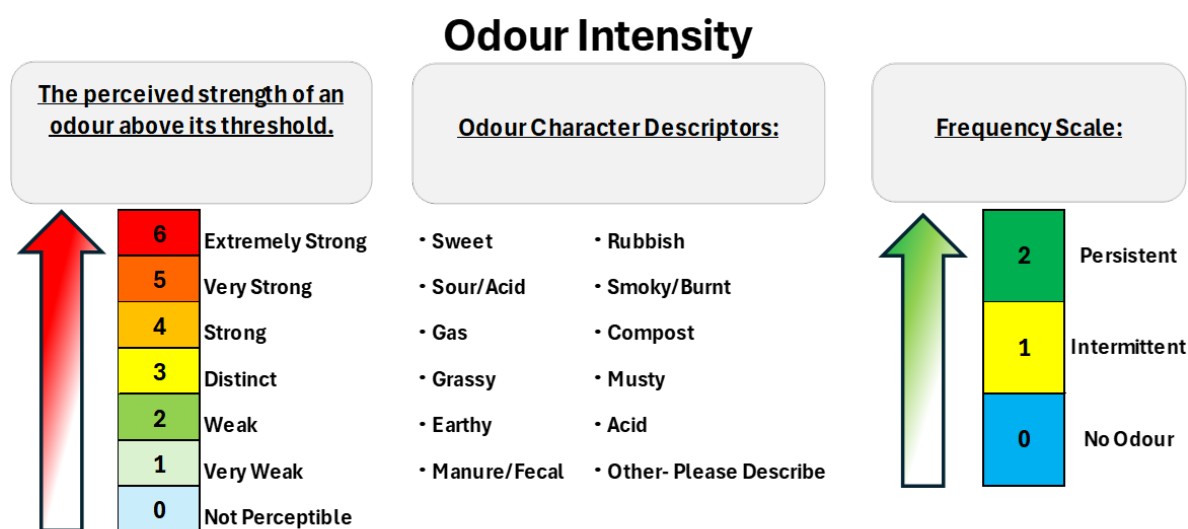
Feedback or Odour complaints can be reported to Redvale Landfill through three different methods,

1. Email: redvalecomplaints@wm.nz
2. Phone call: 09 427 0600
3. Text message: **8601 (New)**
4. Redvale Energy Park Community Liaison website

To work with us, please provide constructive feedback only, which includes the following information,

1. Time and location of the odour
2. Type of the odour
3. Character and intensity of the odour (descriptor + VDI number)
4. Frequency of the odour – how often it occurs, duration of the odour and time of exposure.

(Example Text: Hi there, 3/6 intermittent rubbish odour at XX Tender Road right now.)



Please feel free to access Redvale landfill weather station data by using the below link,

<https://app.outpostcentral.com/english/login2.aspx>

Username: redvaleguest

Password: community

Update on the proposal to extend Redvale Landfill



WM New Zealand has completed the third phase of community and stakeholder consultation on the proposed extension of Redvale Landfill and Energy Park.

Over recent months, we've met with local residents, Dairy Flat School, community groups and elected representatives to discuss what the proposal could mean for the area. More than 120 people attended the community meeting at the Dairy Flat Hall, and (at the time of writing) 155 written submissions were received. We're grateful to everyone who took the time to share their thoughts, concerns and suggestions.

We heard a wide range of views, with most focused on odour, truck movements, proximity to the school and the proposed use of the Government's Fast-Track approvals process. These views were taken seriously and helped inform the Board's decision on the proposal.

In response to questions raised during consultation, we recently carried out independent testing of the school's drinking water. Samples were collected from several taps and analysed by Hill Laboratories in line with New Zealand's Drinking Water Standards. The results confirmed that the water is clean, clear and safe to drink, with no sign of bacteria, metals or chemicals that could pose a risk. We've shared the results with the school and we're exploring what further testing could be done to provide additional reassurance for the community.

The Dairy Flat community has lived alongside the landfill for many years, and we understand that residents want to see greater openness, genuine action, and a willingness to listen. We share that goal. Our focus is on building stronger relationships with the community, the school, iwi and local groups, and supporting a Community Liaison Committee that encourages open, constructive dialogue and helps drive ongoing improvement at the site.

To make it easier for people to raise concerns and get clear answers, a new automated system is being rolled out to help track and respond to feedback more efficiently, alongside continued updates through the CLC.

Community members told us it was important that all feedback be received and considered before the Board made its decision. In response, the decision date was adjusted from 29 October to 10 November, ensuring the process reflects that expectation and gives full weight to community input.

We appreciate the community's patience, honesty and ongoing engagement as we work through this process together.

The Pen Is Mightier Than the Sword

As this is the final newsletter of the year, I write with renewed appreciation for the strength and resolve of our community.

Waste Management has announced plans to apply for a *Fast Track* extension of the Redvale Landfill—an extra eight years beyond its agreed closure date of 31 December 2028.

If successful, Redvale would continue taking waste until 2036, despite assurances earlier this year that it would close once the new Wayby (Dome Valley) facility opens—potentially as soon as 2031.

This proposal has caused understandable frustration, given the community's long-standing expectation that Redvale's role would be temporary. However, there are also positive developments.

Waste Management has now completed its closing submissions to the Environment Court, and it appears most obstacles to starting work at Wayby have been resolved. The new site is expected to be a world-class facility, featuring advanced environmental protections, predator-proof fencing, and far stricter controls on leachate, odour, dust, noise, and pests.

These higher standards should also guide any future operations at Redvale.

It is also encouraging that Auckland Council and the Peer Review Panel intend to be far more proactive in enforcing compliance and addressing issues as they arise, not years later.

We were heartened to see local representatives standing firm on behalf of the community. At the recent Waste Management Hui, Mark Mitchell made it clear he opposes the Fast Track approach and will raise his concerns in Wellington. Our Rodney Councillor, Greg Sayers, supported this stance and committed to taking the matter to the Mayor.

As we end the year, I want to thank Louise Johnston for her exceptional nine years of service on the Dairy Flat Local Board, and welcome Lisa Whyte, whose 18 plus years of Council experience should be invaluable for our community.

Wishing you all a peaceful festive season and every success for 2026 and beyond.

Together, we remain a community that values integrity, accountability, and a cleaner, fairer future.

Warwick Hojem

22 October 2025



Dairy Flat Country Club News

We are excited to announce that our new menu is now available, offering a variety of delicious options to suit every taste. For those with dietary requirements, we continue to provide gluten free choices. Our kitchen features a dedicated gluten free fryer, and we also offer a tasty gluten free pizzas. We are also the only takeaways in Dairy Flat, and we are open until 9pm!



Louisiana Chicken Burger



Fish and Chips

The pool heating is now on for summer!!

Conveniently located at 36 Landfill Access Road, the Dairy Flat Country Club is the ideal destination for families and locals alike.

Parents can take a well-deserved night off from cooking while children enjoy playing in the pool or on our playground. It's also a wonderful spot for friends and community members to gather and enjoy a great meal together.



The Infiltrator CM-1060 Tank

Strong. Reliable. Built to Last.

A lightweight septic tank engineered for long-term performance and hassle-free installation.

The Infiltrator CM-1060 is a next-generation septic tank built for durability, watertight performance and easy installation. Made from advanced compression-moulded polypropylene, it delivers a breakthrough in thermoplastic design – stronger and more resilient than concrete, yet lightweight enough to transport and install without heavy machinery.

Reinforced ribbing and fibreglass bulkheads provide lasting strength under tough conditions, while the watertight build prevents leaks and the reinforced access ports ensure reliability during installation and pump-outs. Heavy-duty green lids blend seamlessly into your landscape, and the tank is fully compatible with Infiltrator's custom-fit risers and patented Biotube® effluent filters for extra system protection.

Versatile by design, the CM-1060 can be used as a septic tank or pump tank.

Stronger and more resilient than concrete, yet lightweight enough to install without heavy machinery.

BENEFITS

- **Lightweight & Easy to Install** – No cranes or heavy trucks needed. Easy access to rural or tricky sites.
- **Durable & Resistant** – Won't rust, crack, or corrode like concrete tanks.
- **Eco-Friendly** – Made with 95% recycled materials, built to last for decades.
- **Landscape-Friendly** – Green lids that blend into your surroundings.
- **Odour Control** – Optional carbon filter to minimise smells.
- **System Protection** – Patented Biotube® effluent filters safeguard your wastewater system.
- **5-Year Warranty.**



PRIMO

PLUMBING

your local plumber

Meet Dan, Your Local Plumber you can Trust? Dan's your local pro, handling everything from Maintenance work to New builds. An expert in off-grid solutions and filtration, Primo Plumbing designs sustainable water systems for lifestyle blocks and modern homes, ensuring top performance and comfort. Available 24/7 for emergencies, Primo Plumbing is upfront about costs—no surprises, just quality work. Call Dan @Primo Plumbing on 021 428 977 or check out our website or find us on Facebook.



Your wedding, your way—without the cost worries

Looking for a simple, stress-free wedding ceremony that fits your budget?

As an experienced wedding celebrant, my goal is to give back to the community by offering affordable, heartfelt ceremonies that make your special day truly meaningful.

Whether you're planning an intimate elopement, a beachside gathering, or a larger celebration, I provide services tailored to your unique needs.

Let's connect, no strings attached and see how I can help make your wedding a personal and memorable experience.

Contact me at nicola@tietheknotnz.com or 0272 698 025 for a chat.

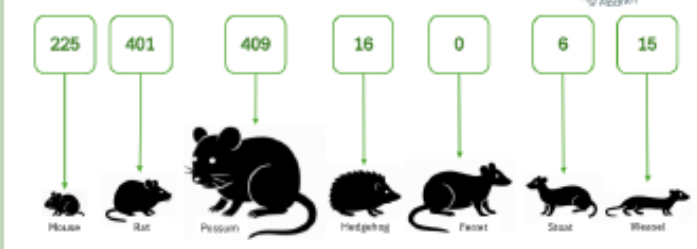
Hello neighbours and friends and welcome to spring!

With all the rain and sun, plus warmer than usual temperatures, everything is growing. And that inevitably means lots of food for our birds & bees. Birds are working hard to raise their broods, which are sadly feeding lots of fat possums and rats - nothing like a plump baby bird or egg snack! So please keep up the great work with trapping!



Pests caught so far in 2025

Total: 1072



What have we done this year?

By 30th September, 9 months since receiving our first grant from Dairy Flat Community Trust, we had subsidised the purchase of 161 traps and the community has reported 1072 catches! FANTASTIC! And we know that some trappers forget to report their catches, so the numbers are likely to be much higher. But we also see lots of roadkill at this time of year, which reminds us there is still plenty to be done.

Introducing the Rangitopuni Stream Reserve restoration project

While suppressing predators is essential, it goes hand-in-hand with restoring the native environment. So when we came across a neglected Council reserve in the heart of Dairy Flat, alongside the Rangitopuni stream, we saw it as an opportunity. The reserve runs about a kilometre along the western side of the stream, from just north of Landfill Access Road, all the way to Richards Road. Imagine a pathway through beautiful native bush in the middle of Dairy Flat, just opposite our school...

How long it takes to restore will depend on you. It can only happen if the Community gets actively involved - especially with the planting in April/May.

This is your opportunity to help in a transformational project with a lasting and permanent impact on the area. Come and help us! Adopt a tree! Be part of something very special.

Please join us and your local community hub! Tell your neighbours and friends. We need your help!

READY TO BE INVOLVED? CONTACT US!

Facebook: Pest Free Dairy Flat:

Email: pestfreedairyflat@gmail.com



With your help, we can restore our local environment and bring back more native birds to our backyards.

Contest result puts Riverhead on the map

There's nothing like a contest to spice-up your interest and motivation. Toastmasters offer four major contests for members worldwide each year. The International, the Evaluation, Table Topics and the Humorous speech contest.

Paul, who founded **Riverhead Toastmasters** along with wife – Tina, took First Place on Saturday in the Division W Humorous Speech contest having already won local contests. The event was held at **Auckland University**. It's the third year running that he has taken the title.

"Humorous speeches can often be generated by recounting one of your misfortunes. At the time, these experiences can be harsh, but looking back, can be rather funny", says Paul.

The win now qualifies Paul to compete for the **New Zealand District 112 Convention** to be held at **Waipuna**, Auckland in May 2025.

Paul originally joined Toastmasters to help overcome shyness in order to build his business – **Club Physical**.

RIVERHEAD Toastmasters meets alternate Tuesdays at 7.10PM, Riverhead Hall

If YOU would love to come as a GUEST and see how Toastmasters could build your confidence in speaking and leading, **please TEXT Tina 027 291 8027**



Dairy Flat Community Hall – Your Local Hub of Fun & Connection!

The Dairy Flat Community Hall is open 7 days a week for local use.

Thinking of starting a class, workshop, or community activity?

The Hall Committee is here to support you with great low starting rates!

What's On at the Hall:

🧘 *Yoga – Mondays*

🎤 *Toastmasters – Every second Tuesday*

🎸 *Rock & Roll Live Music – Every Friday night!*

Full bands, friendly vibes, and visitors from across greater Auckland come for these legendary nights!

👉 Check out what's happening: www.DFlat.info

Licensed bar with club prices – cover charge applies for band nights.

Please note: We're unable to host 18th or 21st birthday parties.



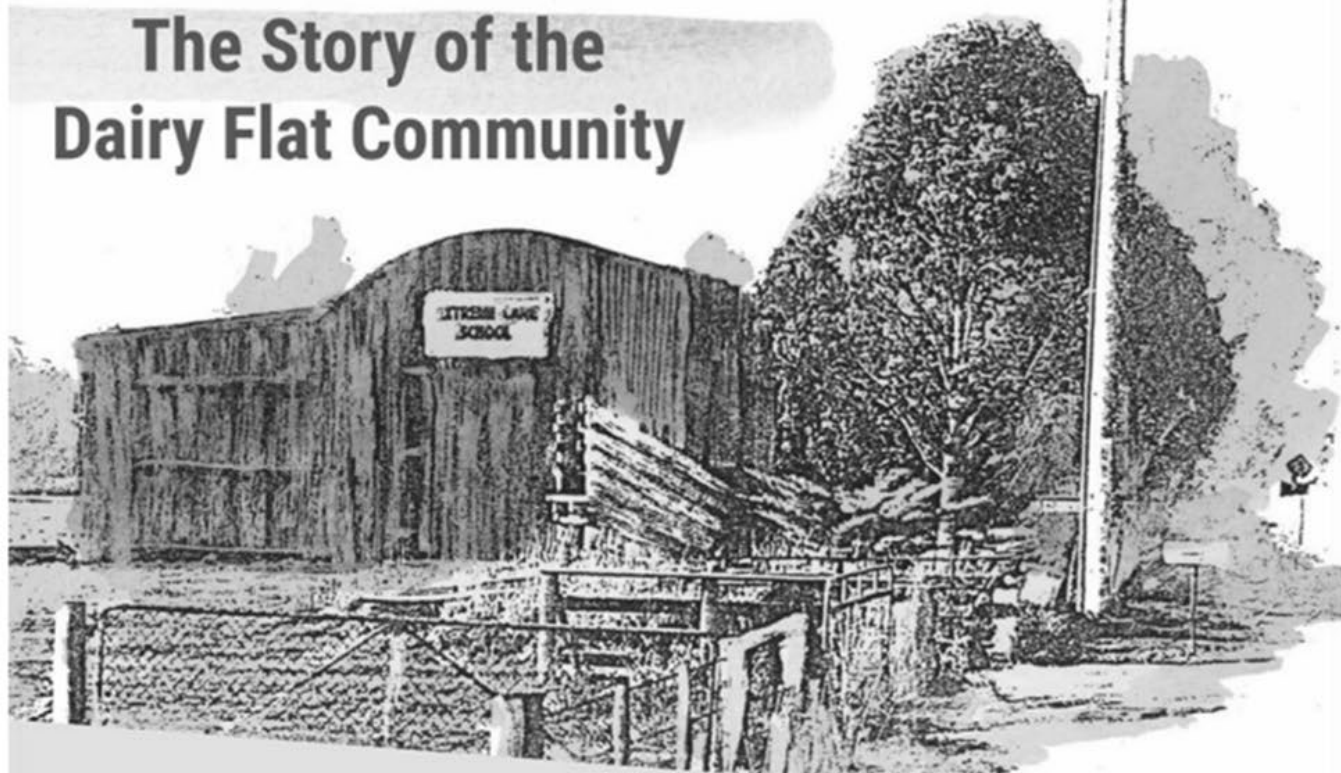
Save the date

Silverdale Pony Club Show Jumping

Sunday the 11th of January, 2026
124 Green Road, Dairy Flat



The Story of the Dairy Flat Community



Hard Graft

By Lynnette Third



ORDER YOUR COPY

Please email or phone the Dairy Flat Community Trust to place your book order.
Please use your name, postal address, postcode, phone number (optional)

Email: stubbz@extra.co.nz

Phone: Barbara Stubbs 09 420 4094

\$39.00 + \$10.00 p&p (\$49.00 in total) to this account with your name as
reference:

Account Name: Dairy Flat Community Trust
Account Number: 12-3046-0249577-51



Offering an extensive range of promotional giftware and top quality promotional, corporate and sports apparel.

We assist businesses of all sizes in developing the ideal solution for their branding requirements. Our goal is to ensure we get it exactly right when collaborating with your business.

Whether you have a precise vision or just a general concept, we're always eager to listen and discuss ideas. Our extensive range is sourced from New Zealand, Australia, and Asia, offering a superb and affordable selection of promotional products.

Although we provide and brand everything from pens, caps, and umbrellas to bags, shirts, and coffee sets, our main focus is on imprinting one thing - your brand in the minds of your customers.

www.brand4u.co.nz

sales@brand4u.co.nz
M: 021 156 1203

VEHICLES WANTED

WE PAY TOP CASH

For any CARS, VANS, UTES, TRUCKS, 4X4
Dead or alive, damaged, de-registered
Mechanical problems, no WoF, we buy it.

Free Pickup

Or text 021 344 449



Conditions Apply

0800 333 398

News from Local Clubs and Organisations!

We love hearing from our local clubs and community groups!

If you have updates, events, or stories to share, we'd be delighted to include them in our quarterly newsletter typically published in February, May, August, and November.

Please note: Waste Management New Zealand is not responsible for the opinions expressed in submitted articles.

For contributions or questions, please contact Tara Wiggill at TWiggill@wm.nz

Dairy Flat School Annual Ag Day

Dairy Flat School's annual Ag Day is the school's biggest fundraising event of the year, and has been a tradition at Dairy Flat since 1938. The school opens to the community whānau and friends to celebrate the children's achievements, our rural identity and our agricultural heritage.

The emphasis of Ag Day is on the caring and rearing of a farm animal. All students have the opportunity to bring a farm animal to school, which they will have raised and cared for, to participate in the various judged events. Our children learn valuable life skills through raising an animal and the Ag Day process, such as; caring, nurturing, animal health and welfare, responsibility, leadership, confidence, project presentation (through diaries and performance to the judges), patience and resilience. This year we had 17 lambs, 23 chickens and 6 calves.



For students who may not be able to bring an animal, they take part in other activities such as Lego block activities, mystery seeds, insect hotels and scarecrow creations.



This year Ag Day was held on 11 October 2025, and was another great success. Thanks to our sponsors and the Dairy Flat community, we raised \$26,600 to go toward playground upgrades.

LOCAL BUSINESS DIRECTORY

ACCOUNTING SOLUTIONS

- DNA Accounting- Alyson Evans 021 142 4004

AERO CLUBS/AIR SERVICES & TRAINING

- North Shore Aero Club 09 426 4273
Postmans Rd
- North Shore Airport 0800 494 647
Postmans Rd
info@nsac.co.nz
- Airlift NZ- Helicopter Charter, Sales and Management. 027 225 2685
shaun@airlift.nz
- Airlift Engineering- Aircraft maintenance, refurbishment and Avionics. 027 428 6671
ian@airlift.nz
- North Shore Helicopter Training- 021 205 6486
Helicopter flight training and ratings. 09 426 8748
ryan@helitraining.co.nz

AGRICULTURAL CONSULTANTS/CONTRACTORS

- Albany Earthmoving & Landscaping Ltd-Ron Bank 09 426 3825
132 Postman Rd, Dairy Flat 027 4735 243
- Shearer- Sheep and Goats 09 426 9118
Tony

AIR-CONDITIONING/HEATING

- Sales servicing & installations 09 448 5522
Greg Thomas 021 348 800

ALARMS

- Secure Solutions Rodney 09 426 9633
Alarms and Cameras
Dave Hall

AUTOMOTIVE MAINTENANCE/PARTS/REPAIRS

- Workshop Dairy Flat Ltd- Anton 09 426 3922
- Automotive & Towing Ltd-Lee 09 415 6860
Albany Hill
Farm Appliance Maintenance
- Dairy Flat Motors Ltd- Justin 09 426 8220
- Albany Tyres- Albany Hill 09 415 9892

BABYWEAR

- THAT SHOP- Wendy Martin 027 618 2067
Handmade baby wear and Gifts, upcycled and recycled homewares.
15 Lower Jeffs Rd, Dairy Flat

BOATS/BOATING

- Portrush Holdings 021 873 703
Stan Collect
- Mikes Marine Centre 09 426 8556
17 Kahikatea Flat Rd
Dairy Flat

BUILDERS

- Mainframe Builders Ltd- Mike Reidy 09 426 7862
- Jim Findlay Construction Ltd 021 777 981
- Absolute Builders 09 415 6694
Shane Sorensen 021 800 808
- Albany Building Contractors Ltd 09 426 3825
Ron Bank 027 4735 243
132 Postman Rd Dairy Flat
- Golder Residential Ltd 027 4769 205
Steve Golder

BUILDING INSPECTORS

- City Line IR 0800 405 010
info@cityliner.co.nz 021 478 947
www.aucklandbuildinginspections.kiwi

BUILDING MAINTENANCE

- Albany Building Contractors Ltd 09 426 3825
Ron Bank 027 4735 243
132 Postman Rd Dairy Flat

BUS COMPANIES

- Bayes Coachlines Ltd 09 426 5504
Wilks Road

BUSINESS SERVICES & SUPPLIES

- Keith Macky & Assoc 09 426 7422
Horseshoe Bush Rd
- NZ Business Service Ltd 09 426 3992
Kahikatea Flat Rd
- Action International Business Trained 09 426 6333
Coaching & Business Plans
Colvin Sandford 021 726 333

CABINETMAKERS, CANE & WOOD REPAIRS & RESTORATION

- Cane & wood restoration 09 426 0094
J&H Hall
- Laksar Eggleton 09 420 4649

CARPET CLEANING

- Exclusive Carpet Cleaning H&J 09 426 7629
Todd
- All Trade Cleaning-Darren Day 09 426 6642

CARPET LAYING

- David Barrows 09 416 6680
021 067 0945

CARPET OVERLOCKING

- Hibiscus Mats- Lesley 09 421 0465

CARRIERS

- East Coast Bays Carriers (1985) Ltd 09 426 5554
021 757 464

CATERING

- Santerr Catering- Sandra Jordan 09 428 5575

CERAMICS

- Art De Coek- Sharron De Coek 09 448 2337
SH17 Albany

CHILDCARE

- Homebase Child Care- Sophia 022 043 6712
Pick up from school

CHIMNEY SWEEPING

- Select Homes 09 445 3752
- Howies Homecare- Howard 027 304 7631

CLEANING SERVICES

- Carpet & upholstery cleaning, M&J Todd 09 426 7629
- Smiley Cleaners & Property Maintenance. 09 427 6228
Windows and Houses
Les Or Linda 021 2891 437
- D'N'A Property Maintenance 0800 566 766
027 626 9702
0210 786 779
- Spic N Span Home Cleaning Services Ltd- Melissa Morrison
www.spicnspancleaning.co.nz

COFFEE ROASTER

- Lecoffee- David 027 304 5732
david@lecoffee.co.nz

COMPUTER GRAPHICS

- Horun Eggleton 09 420 4649

COMPUTER TECHNICIAN

- Andrew Pearce 09 426 3311
- Computer Specialist 09 444 2142
- Stephen Chan- On site IT for home & 09 415 6276
Small business includes computer tune up, upgrade, new setup, (PC & MAC, Smartphone, Tablet), troubleshooting, WiFi, 021 259 9886

Small business includes computer tune up, upgrade, new setup, (PC & MAC, Smartphone, Tablet), troubleshooting, WiFi, networking, Email settings, Files Backup & Transfer etc.
mcsachan@gmail.com

021 259 9888

Ryan Carrigan, Dairy Flat

EMBROIDERY & SCREEN PRINTING

Joyner Design, 91 Selman Rd 021 033 3643

ENGINEERING SUPPLIES

Hibiscus Engineering Supplies 09 426 6441
Rick Meiklejohn
RBJ Tooling- Greg Barker 0800 725 866

ENTERTAINMENT

North Harbour Country Club 09 426 3391
Landfill Access Rd
Pony Hire for birthdays at your place 09 426 8191
027 494 4257
DÉJÀ VU, Band for adult birthday parties and private events 027 434 3193

EQUESTRIAN SERVICES & SUPPLIES

Saddlemaker- Grice Kerr Saddlery 09 415 4505
94 The Avenue Albany 027 278 7668
Auckland Equestrian Centre 09 415 6349
Riding Lessons
Albany Earthmoving & Landscaping Ltd- 09 426 3825
Arena & Mirrors 027 473 5243
132 Postman Rd, Dairy Flat
Northpark Equestrian- Andrea Bank 09 426 3825
Professional Dressage Lessons 021 856 589
Horse float & equipment hire 09 427 9314
The Seed and Feed Company www.seedandfeed.co.nz

19 Burne Rd, Dairy Flat
Holly Joss Horse Float hire. 021 701 456
A1 Float Hire 021 250 6421
A1floathire@hotmail.co.nz

EXERCISE/FITNESS

Fitness League N.Z.- Olive 09 424 0402
Olivem@clear.net.nz
Dinamic Bodies- group & In-home fitness 09 426 7750
trainer 027 488 8768
Diana Flynn

FARM/STOCK SUPPLIES/STOCK BUTCHERING

Falloons SH17 09 426 4402
Country Meat Processors- Nadia Mead 09 420 3113
021 161 4270

FENCING

Albany Building Contractors Ltd 09 426 3825
Ron Bank- 132 Postman Rd Dairy Flat 027 473 5243
David Taylor 021 336 237
Mike 09 415 5618
R & L Brown 09 426 7150
Roy Herbert 09 420 5357
027 289 5846
Albany Fences- Michael McCool 09 415 5618
021 635 021
Wrought Iron Studios NZ Limited 027 321 7600
We build gates, balustrade and can also assist with general fabrication
www.wroughtiron.co.nz

FIREWOOD

Matea Trust 09 415 7103
022 035 2375
Firewood Delivered- Jeff Bawden 09 426 8191
027 494 4253

FINANCIAL PLANNING ADVICE

John Mclean 09 281 4027
Navigate Financial -Jordan Hilt 021 55 8460
jordan@navfin.co.nz

FLOWER SPECIALISTS

North-South Flowers- Jeffs Rd 09 415 9331

CONCRETE

Solid Concrete Pumps Ltd 09 448 2446
021 630 238
GBJ Concrete 09 426 1086
Greg 021 741 135
Brandon 021 405 033
John Smith Concreting Ltd 09 426 6925
(Driveways) 027 499 2936
Kerbwell Construction Ltd- Lance 027 457 3101
T & T Concrete Works Ltd- Terence 021 351 021

CONSULTING ENGINEERS

Consulting Engineer- Mark 09 421 1178

COUNSELLING/CAREER COACHING

Julienne Rose, NLP Practitioner 021 0202 7400
j.rose@xtra.co.nz

DANCING INSTRUCTOR

Sure to Dance Studio, Dairy Flat Hall 021 169 6390

DESIGN HOME FASHION

Design & Alterations- Merine 09 415 3502
021 708 677

DRAINLAYERS

Carlton Drainage Contractors 09 427 4488
025 884 447
Jeff Bawden 09 426 8191
025 944 253
Meerkat Plumbing & Drainage- Henk 0800meerkat
027 570 5627

DRIVING SERVICE

Freedom Companion Driving Service 0800 956 956
Taxi/Elderly

EARTHWORKS

Geoff Benbrook, Kahikatea Flat Rd, Waitoki 09 420 4196
JW Neil Contractors Ltd, 141 Postmans Rd 09 426 3555
Graham Everson "Everson Earthmoving" 09 415 8823
025 945 520
Brian Finn 09 426 3797
021 922 986
Able Trucking Ltd, Truck & Digger Hire 09 415 7411
91 Foleys Quarry Rd 025 968 202
Dirtworks-lydden 09 476 0004
Pridelands Property Worx Ltd 09 415 6469
Digger/tractor/borer/post rammer/slasher 027 472 3049
Albany Earthmoving & Landscaping Ltd- 09 426 3825
Ron Bank
132 Postman Rd, Dairy Flat 027 4735 243
Rural Maintenance- Brett 09 421 1124
021 117 2287
Northside Hire- Albany (Local Hire Only) 027 492 8184
Warren
Padfoot Roller 7.5ton, 3ton Dumper, 6ton Dumper
Digger For Hire 1.7ton- Collin 027 664 6107
From \$230 a day + GST
Epic360, 77a Kahikatea Flat Rd 09 415 7223
www.epic360.co.nz

ELECTRIC BIKES

Dynamo Electric Bikes 09 426 0600

ELECTRICIAN

AC Electrix Ltd- Adrian Smith 09 426 9955
24hr call out Service 027 439 5414
Coyote Electrical Ltd 0800 Coyote
021 975 858
Carrigan Electrical 021 389 975

• Holt Removals- Rodney	09 427 8112 027 487 3972	• Matea Trust	09 415 7103
GARDENING SUPPLIES/NURSERIES/LANDSCAPING/MAINTENANCE		• Hire log splitter & Operator, contractors for light work.	
• Dahlia Haven- Wilks Road	09 426 7150	• Pridelands Property Worx Ltd	09 415 6468
• Kwik-Kerb- Mike	09 415 5618	• Digger/Tractor/Borer/Post rammer/Slasher	027 472 3048
• Concrete channeling		• U Dig- Mini Excavator Hire - Grant	09 426 0833 021 795 155 09 427 6427
• Waitoki Plants- Lisa Clapperton	09 420 5455	• Minimover Rentals- Peter Vincent	
• Wetland & Bush assessments		• Tip Trucks, Excavators & Bodybox Trucks	
• Garden Design		• North Hire Albany- Warren	027 492 8184
• Plant and Pot NZ Ltd- Jenny	021 0822 4895	• Padfoot Roller 7.5Ton & 3Ton	
• We specialise in custom orders and plant designs. Our goal is delivering you top quality Indoor & Outdoor plants, fast and fresh		• Dumper 6Ton	
• www.plantandpot.nz		• Local hire only	
• Heritage Garden		• Treecare Crane Hire- Terry Bassett	027 489 0680
• Garden maintenance, hedge trimming, tree pruning & weeding.	022 167 7067	• www.treecarecranes.co.nz	
• Call for a free quote.		• terry@teca.co.nz	
GRAPHIC DESIGN		• Mechanical Fix Ltd- Shaun Austin	027 855 6242
• Leelawadee Desgn- Graphic Design for all	021 938 448	• Mechanical Engineer repairing anything from small diggers to quad bikes to trailers etc.	
• Print Media - Logo creation, Business cards, Stationery, Flyers, Brochures, Posters, Advertisements, Product packaging, Menus, Signage, And more...!		HOMEKILL	
• mandy.warburton@xtra.co.nz		• Country Meat Processors- Nadia Mead	09 420 3113 021 161 4270
GREENHOUSES		HOMEOPATHY	
• Harford Greenhouses	09 426 0606	• Donna Flavell	09 415 7788
• 45 Forge Rd, Silverdale		HOT WATER CYLINDERS	
HAIR & MAKEUP		• Ingolf- www.cylindersonline.co.nz	09 426 2448
• Freelance hair & makeup artist- Tracey	09 426 0647	HOUSE SITTERS	
• bebau@vodafone.co.nz –	021 057 4626	• Carrie & Paul- Housesitnz@yahoo.com	021 057 6184
• www.bebeau.co.nz		• www.shorehousesitter.wordpress.com	027 324 4487
HAIRDRESSER		HOUSE WASHING	
• Hair & Beauty, SH17- Sharon	09 415 5694 027 457 8712	• Patios, drives, decks- Presale clean-ups a specialty- Glenn	021 485 575
HANDYMAN		• DNA Housewash Limited	09 443 0083 0800 566 766
• Albany Building Contractors Ltd	09 426 3825	• Specialists for 30 years	
• Ron Bank- 132 Postman Rd Dairy Flat	027 473 5243	• Housewashing, Decks, Paths, Driveways, Gutter Cleaning/Guard, Roof Treatments & Spider Treatments	
• Rural Maintenance- Brett	09 420 5596 021 114 2287	INSURANCE	
• Smiley Cleaners & Property Maintenance- Les or Lisa	09 427 6228 021 289 1437	• Mutual Financial Services Ltd-Herman	09 414 6999
• Total Lifestyle Contracting	09 473 3784	• All types of insurance with major companies: Trauma, Disability, Life, Health, Home, Contents, Car, General and Business Insurance.	
• Neil Leuthard	027 487 5627	• Herman@mfs.net.nz	
HEALTH		• Justin Thompson- Specialising in reducing ACC levies for self-Employed	021 949 115
• Nutrition for health and wellbeing	021 393 496	INTERIOR PLASTERER	
• Coach-T Nutrition-Teresa		• Steven Hasthorpe	09 420 5848 025 978 290
• teresa@coachtnutrition.co.nz		JEWELLERY	
• www.coachtnutrition.co.nz		• Dashing Diamonds Jewellery	021 484 125
HEDGE TRIMMING		• Dubai Manufactured.	
• Branching Out- Nick	09 420 5503 027 481 7447	• Kathryn Burns	
• All Hedge work- Matt	022 385 8933	• Kathymburns1971@gmail.com	
• Heritage Garden	022 167 7067	JOINERY	
• Garden maintenance, hedge trimming, tree pruning & weeding.		• Core Joinery	021 165 5356
• Call for a free quote.		• Windows & Door Repairs	
HIRE CONTRACTORS/SERVICES		• info@corejoinery.co.nz	
• Able Trucking Ltd	09 415 7411	• www.corejoinery.co.nz	
• Truck & Digger hire	025 968 202	KITCHEN DESIGNER	
• Albany Earthmoving & Landscaping Ltd- Ron Bank	09 426 3825 027 473 5243	• Jo Harris	09 426 6085 021 620 418
• 132 Postman Rd Dairy Flat		• joharris@xtra.co.nz	
• Brian Rutter	09 426 0266 021 961 263	KIWISAVER ADVISE	
• Crane & Hiab Hire	09 426 5554 021 757 464	• John Mclean	09 281 4027
• JW Neil Contractors	09 426 3555	LANDSCAPERS	
• Excavators/Trucks/Diggers		• Albany Earthmoving & Landscaping Ltd- Ron Bank	09 426 3825 027 473 5243

Premium Landscapers Ltd- Colin
All facets of landscaping
Decks, Retaining Walls, Driveways, Pools
etc.
colin@premiumlandscapes.co.nz

LEISURE

Group Fitness Classes- Massey University
Contact- Michelle
Fitness League NZ- Silverdale Hall
Mon 10am & Wed 09:30am
Olive

LIFE COACHING

Heather Howes
Astrum Coaching- Carolyn Bassett
www.astrumcoaching.com
carolyn@astrumcoaching.com

LIFESTYLE, LIVESTOCK, FARM SERVICES

Roest Rural Services, free quotes

MACHINERY REQUIREMENTS

Lathe, Milling & Cutting Tools
Greg Barker
Wrought Iron Studios NZ Limited
General fabrication and repairs to plant and
equipment.
www.wroughtiron.co.nz
Mechanical Fix Ltd- Shaun Austin
Mechanical Engineer repairing anything
from small diggers to quad bikes to trailers
etc.

MAKE UP

Make-up Artist and skin specialist
Ann Thomas

MARRIAGE CELEBRANT

Nicola Stuart
nicola@tietheknotnz.com

MASSAGE THERAPIST

Relaxation Massage
Irene Brett- Silverdale

MECHANICAL

Lynch Built
Automotive Fabrication & Welding Repairs-
Tony
Workshop Dairy Flat- Anton
Mechanical Fix Ltd- Shaun Austin
Mechanical Engineer repairing anything
from small diggers to quad bikes to trailers
etc.

MORTGAGE BROKER

Michelle Mile- Thompson
Jacob Teleiai
jacob@vegalend.co.nz

MOTOR HOMES & HORSE COACHES

Frontier Motorhomes

MOWING SERVICES

Rodney Property Maintenance- Tony
Impressions- Jordan Reid
Heritage Garden
Garden Maintenance, Hedge trimming, tree
pruning & weeding.
Call for a free quote

MUSEUM

World War 11 Flying Museum
Commemorative Air Force NZ Trust Board)
Air Base

MUSIC

Flute Tuition ATCL- Jody Wood
29 Turley Road
Flute & Recorder teacher-Taryn Lunny
Piano Tuner- Glenn Easley
Flute, Clarinet, Saxophone, Recorder and
Theory teacher- Mary O'Brien and
AIRMTNZ

NET SERVICES

Net Service Ltd- David Go
91 Bawden Rd Dairy Flat
www.netservice.co.nz

OFFICE SERVICES

TLC Virtual Assistant-Taryn Lunny
PA and admin services, Monthly accounts.
Your premises or Mine.
Pink Diamond VA Ltd- Jenny
Virtual Assistant for primarily for Lawyers
but can also work with other business for
their admin needs.
jenny@pinkdiamondva.co.nz

PACKERS

Moving House

PAINTERS & DECORATORS

Decko Finishes
deckofinishes@gmail.com
Pittura Limited- Dragan
Painting, Decorating & Gib-Stopping

PANELBEATING

Steve Carrigan

PASTURE MANAGEMENT

R & L Brown Contractors
Mowing/ Topping rural pasture
Rodney Property Maintenance- Tony

PERSONAL TRAINER

Fitness with Libby
Libby.augustin@gmail.com

PEST CONTROL

Select Home Services
Titan Pest Control
Howies Homecare
Pest Free Dairy Flat
pestfreedairyflat@gmail.com.

PETS/PET SERVICES

Cosalta Poodles- Dog Groomers SH1
Woodfall Boarding Kennels SH1
Redvale Boarding Cattery
421 Bawden Rd
All Pals Dog Grooming
Green Road
Auckland Pet Funerals- Dave Stephens
www.aucklandpetfunerals.co.nz
Parrot Society Inc
Jim Trevett
pinevalleyfarm@xtra.co.nz
Pet Food, Wags & Whiskers Ltd
All main brands- Free Delivery
www.wagsandwhiskers.co.nz
Animal Angels- In home pet feeding service
www.animalangels.co.nz
Epicfishnz- Aquarium hire
18 Top Road Redvale
Ross McWilliams info@epicfishnz.co.nz
www.epicfishnz.co.nz
Pet minders
Carrie and Paul- housesitnz@yahoo.com
www.shorehousesitters.wordpress.com
Pawz Perfect Dog Training

K9 Fundamentals- Dog Training
Fiona Potter Rd 027 494 1841

PLUMBING & HOME MAINTENANCE

Josh York 09 4211 1881
ja.york@hotmail.com 021 607 572
KPL Plumbing- Chris 09 412 9108
Meerkat Plumbing & Drainage-Henk 0800meerkat
Primoplumbing- Dan Airey 021 428 977
info@primoplumbing.co.nz
www.primoplumbing.co.nz

PONY CLUB

Dairy Flat Pony Club- Ann Neilson 021 470 571
dfponyclub@gmail.com

POTTERY

Potter & Dabble- Rent a Pottery Wheel 021 525 3771
We have Nidec Shimo Whisper-T Pottery
wheel available to rent perfect for any
potter.
Pick up Dairy Flat
louise@potteranddabble.co.nz

POULTRY

Chooketeria- Self-service chicken feeder- Ron 09 426 1205

PRINTING

Safari Print- Greg Brydon 09 426 7448
021 178 1468
Kiwi-T's 09 426 3520

Screenprinters- T-shirts, Signs, Car Decals,
Banners, Promo goods, Embroidery,
Graphic Design.
33 Forge Road, Silverdale
Sales@kiwirs.co.nz
Joyner Designs 021 033 3643
Embroidery- Screenprinting- Decals-
Signage
91 Selman Road Dairy Flat
donna@joynerdesigns.co.nz

PRIVATE HIRE

Driving Miss Daisy- Jane Pennington 09 473 8186
Franchise Owner Northbays 021 473 818
northbays@drivingmissdaisy.co.nz 0800 948 432
www.drivingmissdaisy.co.nz
Out and About- Christine Fox 09 427 4111
Private passenger service 021 184 5391

PROMOTIONAL PRODUCTS & APPAREL

Brand4U-All promotional products and
apparel- www.brand4u 021 156 1203
sales@brand4u.co.nz

PROPERTY MAINTENANCE

DNA Housewash Limited 09 443 0083
Specialists for 30 years 0800 566 766
Housewashing, Decks, Paths, Driveways,
Gutter Cleaning/Guard, Roof Washing,
Roof Treatments 7 Spider Treatments
Rodney Property Maintenance 021 188 9530
Rural Maintenance-Brett 09 421 1124
021 117 2287
027 677 0747
Tk Revive Ltd- outdoor property
maintenance
kim@tkrevive.co.nz
www.tkrevive.co.nz
Exceed- Repairs to windows, Doors,
Security Doors, Insect screens. 0800 252 503
www.exceed.co.nz

PROPERTY MANAGEMENT

Hollie Joss Property Management 09 948 3255
021 701 456
A Grade Property Management 022 500 2040
rent@agradeproperty.com
Property Locker- Sue Ataie 027 335 5805
www.propertylocker.co.nz

Barefoot and Thompson 027 809 6687
Chantelle Fenton 09 473 9190

PUMPS

Pumpland Sales & Technical 09 426 1205
027 203 7723
Pumps and Filter repair- Nick Ton 09 415 8861
021 111 6593

REAL ESTATE

Bayleys Real Estate 09 426 5911
Country & Coastal Lifestyle Specialist
Karen Asquith
Karen.asquith@bayleys.co.nz
Barefoot and Thompson 027 246 4004
Andrea Kent
Cooper & Co Harcourts 021 434 917
Nigel Smith 027 278 8405
Jacqui Cantell
NZ Sotheby's International Realty 021 525 882
Your Local Luxury & Lifestyle specialist
Natalie Newton
Natalie.newton@nzsir.com
Barefoot and Thompson 021 190 0881
Ray Qu 09 448 2282

RECYCLED

THAT SHOP Upcycled & Recycled 027 618 2067
homewares.
Handmade Baby wear and gifts
15 Lower Jeffs Rd, Dairy Flat
Wendy Martin

RENTALS

Potter & Dabble- Rent a Pottery Wheel 021 252 3771
We have Nidec Shimo Whisper-T Pottery
wheel available to rent perfect for any
potter.
Pick up Dairy Flat
louise@potteranddabble.co.nz

ROCK/METAL SUPPLIES

Redvale Lime 06 426 3503
Horseshoe Bush Rd
Montgomery Transport 09 426 8566
Rodney Metal Supplies 025 291 238
Brian Finn 09 426 3797
021 922 986
Albany Earthmoving & Landscaping Ltd- 027 473 5243
Ron Bank
132 Postman Rd Dairy Flat

ROOFING

Right Now Roofing- Nathan Houston 021 220 5000
DNA Housewash Limited 09 443 0083
Specialists for 30 years 0800 566 766
Gutter Cleaning/Guard, Roof washing & 09 415 1529
Roof Treatments- Reg Hopper (evenings)

SCAFFOLDING

Cube-s Scaffolding Services Ltd 09 948 4989
17 Kahikatea Flats Rd Dairy Flat
cubesc scaffolding@gmail.com
Trademe OSA One Stop Access
TradeHire 021 859 841
108 Wilks Rd, Dairy Flat 0800 007 123
admin@tradehire.co.nz

SEWING ALTERATIONS

Cathy- Professional sewing alterations for 027 429 3306
all types of garments. Experienced
dressmaker and embroidery artist.
Horseshoe Bush Road
www.cathyjanedesigns.com

SMALL ENGINE REPAIR

- The Mobile Mower Doctor 027 495 5948
Andrew Hall 0800 MOA DOC
- Mechanical Fix Ltd- Shaun Austin 027 855 6242
Mechanical Engineer repairing anything from
small diggers to quad bikes, to trailers etc.

SOLAR HOT WATER

- Solar One Ltd, Dairy Flat 09 426 2449

SPORTS & EVENTS CONSULTANTS

- Chris Simpson 021 905 395

SWIMMING POOL & SPA REPAIRS

- Poolside Services 09 473 5562
- Poolgas- gas & diesel, pool heating 09 426 7750
services- Shane Ostermeyer 027 276 1761
- Ultimate Pools- Swimming Pool Installers 0800 800 744
Postmans Road, Dairy Flat
www.ultimatepools.co.nz

TENNIS CLUB- DAIRY FLAT

- Cnr Postmans Rd/SH1 09 415 8773
President: Graeme Burton 09 420 3299
Secretary: Jenny Armstrong

TOWING

- North Harbour Towing & Salvage- Russ 09 415 9779
027 492 1668

TOWN PLANNING/RESOURCE CONSENTS

- Kate Madsen 09 442 2959
Kate@pauaplanning.co.nz 021 944 583

TRAVEL CONSULTANT

- Sharon Race –experienced travel 021 034 8276
professional.
Local DF business, I can meet you at a cafe
or your home to chat about your plans.
One stop shop for all travel products
Access to specials & deals.
sharon@racetravel.co.nz

TREE FELLING

- Auckland Tree Masters 09 426 7912
www.aucklandtreemasters.co.nz 021 124 6478
- Treepro- Willy 021 647 365
- Branching Out - Nick 09 420 5503
027 481 7447
- Big Country Tree Works, Tree felling & 021 419 014
Hedge
- Rural Maintenance- Brett 09 421 1124
021 117 2287

UPHOLSTERY FURNITURE

- Superb Upholstery Ltd 09 426 3315
New and recovery work

VEHICLE DETAILING

- Detailed Finished 09 391 1609
Zavier Coulam & Ben Rhodes
Mobile Detailing business. Cleaning inside
and out, detailing & polishing of cars, vans,
trucks and fleet vehicles.
info@etailedfinish.co.nz

VENUE HIRE

- North Harbour Sports and Country Club 09 426 3391
De Hot Bar and Grill 022 048 3373
- Dairy Flat Hall Booking 09 426 2425
021 661 455

VETERINARY CLINICS

- Dairy Flat Veterinary Clinic 09 426 9535
Kahikatea Flat Rd

WATER CARTAGE

- Select Home Services 09 445 3752

WATER/SEPTIC TANKS & SYSTEMS

- Septic Tank Cleaning- Peter Hunt 09 426 9015
- Bruce Johnston 09 428 5922
027 280 2798

- Refection Treatment Systems, Wastewater 09 411 7337
treatment specialists, designs, installer.

WATER SUPPLY

- Foley's Water (17,000 Litres) 027 436 4511

WATER TANK CLEANING

- Bruce Johnston 09 428 5922
027 280 2798
- Select Home Services 09 445 3752
- Mark Painton 021 776 775

WEBSITE DESIGN

- Websonic- Isaac Wilson 022 318 9118
hello@websonic.co.nz
- Kate Strata 027 721 1017
www.katestraka.com
- Steve Hart 09 889 3839
Copywriting and magazine design
Podcast production, Word press website
design.
www.SteveHart.co.nz

WEDDINGS

- In Association with North Harbour Sports 027 269 8025
and Country Club/ De Hot Bar and Grill
Nicola Stuart

WORD PROCESSING & DATA ENTRY

- Heather Palacio- word 09 427 8087
processing/transcribing
- Carolyn Bassett- Carolyn@teca.co.nz 09 448 2211
027 627 8786

WRITING

- Jodie Beach 021 199 2690
Copywriting
www.jodiesbeach.com

CRAFT CONNECTION

- Gallery Sixteen 09 412 9669
Main Highway, Huapai/Kumeu
- Swamp Kauri Craft 09 411 8753
Hinai Rd, R D 1 Waimauka
- Dreamtime Ceramics 09 427 4152
Michelle Akers, Burne Rd
- Griceland Alpacas 027 266 0764
Alpaca Fibre- Raw or processed
All natural colours 50g Balls
- Waitoki Every Craft Group 09 420 5455
Convenor Lisa Clapperton
- Artwork for Sale & Art Classes 09 426 3799
(max 3 students per class)
Painting, sketching & mixed Media
Ruth Summer

OTHER

- Everlasting Moments 021 467 458
which is an Audio Guestbook Rental
business, plus a few little additional items
for sale.
enquiries@everlastingmoments.co.nz
www.everlastingmoments.co.nz

***If you have phoned and found a business is no longer operating,
please let us know and we will delete it from the Directory***

Many Thanks Tara

09 427 0600

Twiggill@wm.nz