

# DAIRY FLAT NEWSLETTER

Produced by the Redvale Landfill Community Liaison Committee  
and the Dairy Flat Community Trust

Publisher – Waste Management NZ Ltd  
**November 2023**

Delivered by – Silverdale Pony Club  
Volume 32 Number 4

*You can find past issues at: [www.wastemanagement.co.nz/redvale-energy-park-community-liaison/dairy-flat-newsletter](http://www.wastemanagement.co.nz/redvale-energy-park-community-liaison/dairy-flat-newsletter)*

## REDALE LANDFILL COMMUNITY LIAISON COMMITTEE

### Current members:

Warwick Hojem-----Chairman  
Louise Johnston-----AC  
Maxine Joubert-----AC  
Bob Gibbs ----- Local Resident  
Andrew McNeil----- Local Resident  
Jennie Hutchinson----- Local Resident  
Nick DeWitte----- Local Resident  
Allan Nicholas -----NHTCC  
Mark Drury ----- Peer Review Panel  
Glen Jujnovich ----- Waste Management

The Committee's role is to allow issues and concerns relating to the operation of the landfill to be debated and negotiated. Should you have any questions or concerns regarding Redvale Landfill please contact Reception on 09 427 0600 or your nearest Liaison Committee member. Complaints should be forwarded to [redvalecomplaints@wastemanagement.co.nz](mailto:redvalecomplaints@wastemanagement.co.nz) or 021 190 2018

Members were elected to the Committee by the community or have been appointed to represent particular interest groups. **Minutes of the meetings are available for perusal at the Waste Management NZ Ltd office.** Any member of the public can attend and be heard at these meetings as long as at least two days' notice is given to the Secretary, Steph, via email - [Redvale@wastemanagement.co.nz](mailto:Redvale@wastemanagement.co.nz)  
Our next scheduled meetings at the Waste Management Office for 2024 – 12 Feb, 13 May, 12 Aug and 11 Nov.

## DAIRY FLAT COMMUNITY TRUST



### Current Trustees:

Steven Earwaker	Heather Turley
Treve Kunzli	Barb Stubbs
Elizabeth Mackay-Cotter	Glen Jujnovich
Tony Rouse	

*The Dairy Flat Community Trust is a charitable Trust to administer and distribute monies provided for the Community of Dairy Flat by Waste Management NZ Ltd.*

*Please see our Trust website:*  
[www.dairyflatcommunitytrust.co.nz](http://www.dairyflatcommunitytrust.co.nz)

*Should you have any questions concerning the Trust, please contact:*

*Secretary – Steph Dryland - Ph: 09 427 0600*

# Dear readers,

This is the final Dairy Flat Newsletter for 2023 and at outset, let me wish all of you and your families and friends season's greetings and hoping that 2024 will be good to all of you, too.

The Rugby World Cup final was a mighty arm wrestle between two worthy opponents where there could only be one winner and the Springboks prevailed, winning 12 – 11. The game was not without controversy, with the TMO seeming to have a major role and the game was also marred by three yellow cards, with one converting to a red. Still on sport, the Black Caps are still in the running for the Cricket World Cup semi-finals, despite losing by five runs to Australia this past weekend. And, the Kiwi Ferns beat the Australian Women's Rugby League team 12 -6 in the Pacific Championships this past weekend. Moving on to non-sport related matters, Covid is still about and most of us seem to now accept it is just another contagious disease.

On the local front, the Dairy Flat Community Hall served as a polling station for the 2023 elections, with a swing to the right although special votes still need to be accounted for by 3 November, at which point we might know the make-up of the new government. The Dairy Flat Community Hall also hosted the inaugural invitational Primary Schools chess tournament last month, contested by 21 pupils under 14 years old from four different schools competing over four rounds. The outright winner was Liam, a home schooler, with a score of 4 from four games and Hannah from Waitoki School, with 3½ from four games filled the runner up spot. Two pupils from Dairy Flat School and another home schooler tied for third spot, each scoring 3 from their four matches.

Weatherwise, we have had a few warm days although the nights are still cool. That said, Cyclone Lola arrived yesterday and it is still blustery and raining as I write this newsletter. Hopefully, rain water tanks are filling up and if the predicted drought arrives, we will hopefully have less water trucks plying back and forth later this year and early into next year.

By the time that you read this report, all of the local primary schools will have had their Ag Days and speaking to people involved in at least two of the schools, their Ag Days were well attended and very successful, raising much needed finance for school projects and for those children who showed lambs, kids, chickens or calves, the responsibility that comes with keeping an animal came to the surface and evidenced at the respective prize givings.

Homing in on the Dairy Flat area, it is important to mention that Waste Management is still aiming to complete the fill by the end of 2028 and then proceeding to the capping, planting and restoration of the site. Every quarter, the complaints register is tabled at the quarterly CLC meeting and actions taken by Waste Management and/or Auckland Council Compliance are discussed. Please note that odour, noise, dust and vermin complaints linked to the Waste Management operation can be lodged directly with Waste Management or, by contacting Council on their pollution hotline (09 377 3107). More information can be found at the Council webpage for reporting pollution to Auckland Council.

It is also important to mention that Kirk Storie, a long-standing representative of the Horseshoebush Road community has stepped down from his role representing this road and a vacancy has now arisen that needs to be filled, ideally by another Horseshoebush Road resident. It is important that each road has an active member representing their road and interested parties are asked to please put their names forward to the Waste Management Secretariat or to myself.

Till next time  
Warwick Hojem

## VDI scale for reporting an odour complaint.

Feedback or Odour complaints can be reported to Redvale Landfill through three different methods,

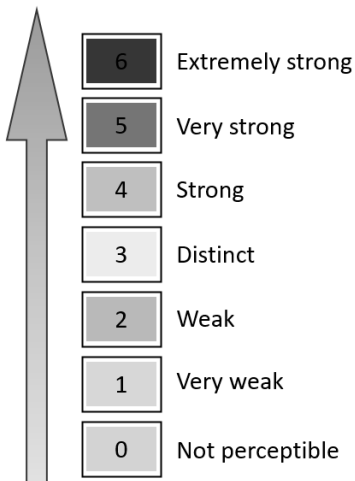
1. Email [redvalecomplaints@wastemanagement.co.nz](mailto:redvalecomplaints@wastemanagement.co.nz)
2. Phone call 09 427 0600 or 021 190 2018
3. Text message 021 190 2018

To work with us, please provide constructive feedback only, which includes the following information,

1. Time and location of the odour
2. Type of the odour
3. Character and intensity of the odour
4. Frequency of the odour – how often it occurs, duration of the odour and time of exposure.

*VDI scale example below on how to classify odour intensity.*

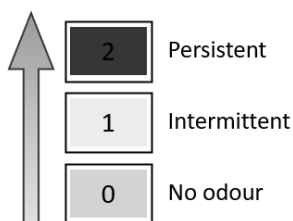
### Odour Intensity



Odour Intensity: The perceived strength of an odour above its threshold. It is determined by an odour panel and is described in categories that progress from “Not perceptible”; “Very Weak”; “Weak”; “Distinct”, “Strong”, “Very Strong”, to “Extremely Strong”.

*The best way of assessing odour is via the human nose. But everyone reacts to odours differently. One person may object strongly to an odour while another is not bothered by it. The only objective method to assess odours is a calibrated nose that has completed Olfactometric measurement.*

### Frequency Scale



Odour frequency: The perceived duration of time or exposure experienced.

Please feel free to access Redvale landfill weather station data by using the below link,

<https://app.outpostcentral.com/english/login2.aspx>

Username: redvaleguest

Password: community



*Nicola Stuart*

C E L E B R A N T

+64 27 269 8025 | [nicola@tietheknotnz.com](mailto:nicola@tietheknotnz.com)

[www.tietheknotnz.com](http://www.tietheknotnz.com)



@tietheknotnz



Looking for an affordable wedding venue that can cater to your needs, from a small elopement/registry type wedding to the full works? Consider the North Harbour Sports and Country Club, with catering by De Hot Bar and Grill - a local option right in your backyard!

As a wedding celebrant, my goal is to help make your special day as stress-free and enjoyable as possible. Whether you only need my services as a celebrant, or if you require more extensive assistance with venue arrangements and catering, I am here to help.

Our venue can accommodate weddings from as small as 4 people and up, with pricing that is tailored to your specific needs. Additionally, if you have a venue in mind elsewhere, I am available to serve as your celebrant there as well.

Contact me at [nicola@tietheknotnz.com](mailto:nicola@tietheknotnz.com) or via mobile at 0272 698 025 to learn more. Let's connect and discuss how we can work together to make your dream wedding a reality - no obligation and no charge for a chat!

## **Dairy Flat Community Hall**

Contact details: Please E-mail [info@DairyFlatLive.com](mailto:info@DairyFlatLive.com)

Hall is available for community use 7 days a week. If you like to start classes or other activities in the Hall, the Hall committee will support you, with low starting rates.

### **Activities in the Hall**

- Yoga on Monday
- Toast masters on Tuesday/ fortnightly
- Every Friday night Rock & Roll on live music/ full bands people travel from all over great Auckland to Dairy Flat for those nights.

Check out what's on: [www.DFlat.info](http://www.DFlat.info)

Many locals are very surprised, when they find out what's going on in the Hall on Friday nights. Licensed Bar with Club prices. Cover charge for bands applies.

### **Hall hire**

Hall is available for Parties on Saturday nights. Sorry we don't support 18<sup>th</sup> and 21<sup>st</sup> birthday parties in the Hall.

**Feeling Fab Charitable Trust**  
12 Aileron Rise  
Dairy Flat, Auckland 0794

[www.feelingfab.org.nz](http://www.feelingfab.org.nz)



Our Wellness Programme provides a safe, nurturing environment for those who have faced bereavement, trauma or loss, to experience the love and support that is so often missing during the seasons of grief. Our programme offers the opportunity to meet others who have had similar experiences and our team has huge hearts and understands that those grieving need tender loving care in a safe environment.

We have provided this much-needed service in our local area (including Dairy Flat) for seven years now and we have been consistently told - and seen and heard for ourselves - how vital our programme is for those travelling along their journey of grief. A huge thank you to Waste Management for the unconditional use of their rooms and the support of the Dairy Flat Community Trust.

We now have teams in Dairy Flat, Warkworth, Mangawhai, Dargaville, Rodney and Wellington. We are growing rapidly as we cover the whole of Auckland and we really need your help in being able to continue our programme. If you would like to volunteer, please contact us at [volunteers@feelingfab.org.nz](mailto:volunteers@feelingfab.org.nz). We need help with admin work, committee members, hair stylists, makeup, nails, general help (and sometimes reiki and massage), organising food, support people on the day etc).

We are also now doing Men's Days, which is much needed, our first one was a huge success. We need your support and help to keep our programme afloat - not just volunteering but also sponsorship and funding opportunities. We have had the honour to work with Red Beach Hospice, Harbour Hospice, Women's Refuge Rodney, Sweet Louise, Race 4 Life and Grandparents Raising Grandchildren, just to name a few throughout our Rodney area.

Please check out our Facebook and Instagram pages and our website ([www.feelingfab.org.nz](http://www.feelingfab.org.nz)) for more information, for testimonials, live-streamed videos etc.

WE NEED YOUR HELP!! Please email us at [hello@feelingfab.org.nz](mailto:hello@feelingfab.org.nz), or PM us via our Facebook page if you would like to discuss this further. Thank you, from Elizabeth and the FF Team.

**Kind regards,**

**Elizabeth York**  
**CEO/National Co-ordinator,**  
**Feeling Fab Charitable Trust**



## **Discover Dairy Flat's Hidden Gem: The North Harbour Sports and Country Club!**

Located at 36 Landfill Access Road, Dairy Flat, our Club offers a warm and inviting atmosphere, perfect for families looking for a great meal and a relaxing environment. But that's not all! Our peaceful location, surrounded by beautiful grounds and ample car parking make us the perfect escape to the country. With friendly staff and delicious food, you'll feel right at home here.

As a club, we welcome both members and non-members. Our team at De Hot Bar and Grill, led by Terri, is committed to providing good home-cooked meals at reasonable prices to all. We pride ourselves on being family-friendly and providing a safe and relaxed environment for everyone. The pool heating is now on – Swimming charges are members free, non members attending with a member \$5 per swimmer, casual \$10 per swimmer.

Join us on Friday Club night for Meat Raffles (bring cash) and for members, a chance to win up to \$1,000 in our cash draw!

We are now offering camping facilities for those travelling in self-contained motorhomes, RVs, campervans, or buses, with non-powered, overnight parking available for \$10 per person per night – please note must be self contained and no hot showers available.

So whether you're looking for a drink, a meal, a swim, or a place to camp out for the night, North Harbour Sports and Country Club has got you covered.

**We can't wait to see you at "The Club" soon!**

**Website: [dairyflatclub.co.nz](http://dairyflatclub.co.nz)**

**Facebook: <https://www.facebook.com/dairyflatclub>**

**Email: [info@dairyflatclub.co.nz](mailto:info@dairyflatclub.co.nz)**

**De Hot Bar and Grill (for reservations and enquiries) Terri 09-426 3391 or 022 048 3373**

### **News from Local Clubs and Organisations**

**Contributions to the newsletter are welcome. The newsletter is printed every three months. Waste Management accepts no responsibility for the opinions expressed in the articles submitted to the newsletter.**

**Please contact: Stephanie at Waste Management NZ Ltd**

**Contributions can be emailed to: [Redvale@wastemanagement.co.nz](mailto:Redvale@wastemanagement.co.nz)**

## Real estate sold by real experts

Natalie Newton has received multiple national and international accolades that acknowledge her experience in business development, understanding client needs and results-driven practice. It is her onus on integrity and honesty which allows her to form powerful working relationships with colleagues and clients, truly working towards their greatest needs.

Natalie's premium results reflect her commitment, expertise, and local knowledge. She is dedicated to designing an extraordinary experience for every client, at any price point, so they can achieve their aspirations – today, instead of someday.

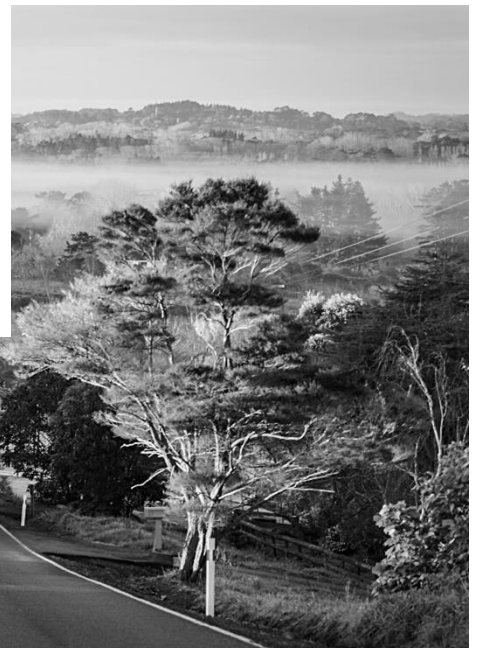
Not only is she a real estate agent, she is also your neighbour. Would you like a discreet appraisal or a coffee and a chat about your home?

Give Natalie a call.

+64 21 525 882 | [natalie.newton@nzsir.com](mailto:natalie.newton@nzsir.com)



New Zealand | **Sotheby's**  
INTERNATIONAL REALTY



Each Office Is Independently Owned and Operated. NZSIR North Limited (licensed under the REAA 2008) MREINZ.

# **Silverdale Squash Club - Now open to the Public**

Casual bookings \$30 per court per hour

To book and pay please go to [www.silverdalesquash.helloclub.com/register](http://www.silverdalesquash.helloclub.com/register)

We are located in the Silverdale Rugby Club building at 6 Hibiscus Coast Highway opposite the Hibiscus Coast Bus Station.

We have 3 squash courts, clubrooms, a licensed bar and are open 24/7 for playing.

We offer a range of membership options to suit your needs, or you can play casually with no contract.

## **Club night every Thursday**

Why not come down to our friendly club night on a Thursday from 7pm, meet other members and have a few fun games whilst keeping fit. We run 15-minute games and will match you with other members of similar ability. Not a member no problem you can try our club night two times before we ask you to become a member. We have a fully licenced bar so why not stay for a drink and beers are only \$5 on club night.

## **Introduction to Squash every Sunday afternoon**

New to Squash? Ever wanted to have a go, then why not come down on a Sunday from 3pm and we will show you how to hold your racquet, how to hit the ball and match you with other players of similar ability. Don't have any gear – no problem wear comfortable clothes for running and non-marking shoes and we will provide you with a racquet and ball. Bookings essential so you will need to register - [www.silverdalesquash.helloclub.com/register](http://www.silverdalesquash.helloclub.com/register)

## **Juniors**

Juniors now running every Wednesday, bookings essential call Brian 021 727 079

3.30pm – 4.00pm: Street Racket for 5- and 6-year-olds. Street Racket is the precursor to all racket sports using a bat and ball.

4.00pm – 4.45pm: Junior beginners 7 to 10 years old.

4.45pm – 5.30pm: Junior beginners 11 years old and above.

5.30pm – 7.00pm: Advanced juniors with competitive aspirations.

For further information please contact Hollie on 021 701 456 or [silverdalesquash.president@gmail.com](mailto:silverdalesquash.president@gmail.com)



## Toastmasters

Renee Johnson, 2023 Finalist for The Young Horticulturist of the Year paid a visit to Riverhead Toastmasters last night. Renee is keen to sharpen up on her speaking skills. She is one of the five finalists who will each be required to complete a three-minute speech before the Winner is then announced.

Experienced Toastmasters at the club were happy to listen, evaluate and advise Renee on several key points to ensure she is sharp.

Toastmasters meets fortnightly on Tuesday evenings 7.10pm at Riverhead Hall. If YOU would love to gain confidence and to sharpen up your own speaking skills, then come as a welcome Guest, text Paul 0272917989



Toastmasters Growth Director, Aroha awarded Louise for her winning speech in the local Area K Table Topics Contest. Aroha then awarded Paul, who has gone on to win the Division Humorous speech contest, held at Massey University.

Also, the Area K Division Director, Marcus Bristol arrived as a special guest at the meeting. Louise is the Club President at Riverhead Toastmasters. Paul, along with his wife Tina, founded the club. Paul will now compete at the Toastmasters Annual Conference to be held in Taupo, May 2024.

If YOU would love to improve your leadership, speaking and listening skills, why not come along as a Guest to the next meeting?

TEXT - 027 291 7989



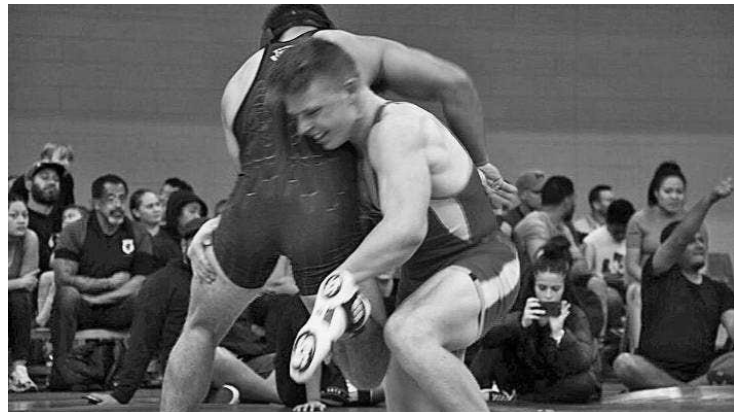
## Club Physical

Dairy Flat's Commonwealth Games athlete Brahm Richards has again been awarded Best Senior Wrestler at the New Zealand Championship, Brahm secures an unusual 'pin' in his eighth successful match at the event.

Brahm coaches and assists Coach Amir at the Club Physical DOJO. Training is non-stop year round with no seasonal stoppage. Training is included for those keen who have a WINNERS or ATHLETES membership at the gym.

The gym itself boasts a full-time DOJO (seven days) along with Saunas, Spa, Swimming Pool and will shortly open its RECOVERY ROOM. This will include an Ice-Bath and INFARED Sauna.

Brahm is a Personal Trainer at the family owned Club Physical and also Coaches some the popular X45 classes.



## **Update from Louise Johnston, Rodney Local Board member**

It is hard to believe that Christmas is just around the corner. Hopefully, we are in for a better summer this year. Below is a quick update on what has been happening in Dairy Flat.

### **Planning for the Urbanisation of Dairy Flat:**

#### The Future Development Strategy for Auckland

The Future development strategy (FDS) provides a 30-year roadmap for how Auckland will grow and develop as a city. The Council formally adopted the FDS on the 2nd of November. In the draft FDS, the Council had flagged several issues with the suitability of the Dairy Flat future urban zone for development, including the natural hazards within the area, such as flood risks, slope instability and the billions required to fund the infrastructure for urbanisation. The final FDS includes the assessment of Dairy Flat for development this is detailed below.

*Extract from the Future Development Strategy:*

### **Silverdale-Dairy Flat, Wainui East and Upper Ōrewa**

**Bulk infrastructure delivery for the Silverdale-Dairy Flat, Wainui East, Upper Ōrewa cluster is not planned to support development until the following timeframes:**

- Silverdale West (Stage 1) – 2030+
- Silverdale West (Stage 2) – 2030+
- Silverdale West (Stage 3) – 2035+
- Weiti – 2035+
- Dairy Flat – 2050+
- Wainui East – 2050+
- Upper Ōrewa – 2050+

Reassessment of the Silverdale-Dairy Flat, Wainui East and Upper Ōrewa cluster did not identify significant challenges that would otherwise make development of the FUAs inappropriate. It is noted that moderate natural hazard risk exists, in particular flooding extent, within the FUA cluster. These effects can be appropriately managed, if structure planning and subsequent plan changes take an integrated catchment management approach. At the time of writing, structure planning has only been completed for the Silverdale West (Stages 1-3) FUAs. Plan changes in relation to Silverdale West must align with this existing structure plan<sup>9</sup>, and any new structure planning carried out for the remaining FUAs in the cluster must be accompanied by a stormwater management plan that outlines an integrated approach for all drainage sub-catchments. Refer to the *Future Urban Evidence Report* for more detail on this assessment.

The FDS replaces the 2018 Development Strategy and the 2017 Future Urban Land Supply Strategy. The FDS will push out the development of Dairy Flat until 2050 and the Silverdale West/Dairy Flat proposed business/industrial until 2030 +. However, the FDS will not prevent developers from lodging out-of-sequence private plan changes, but the FDS does introduce infrastructure prerequisites for development.

## Lodging of the Notice of Requirements Supporting Growth's integrated transport networks for Dairy Flat

As part of the planning for the urbanisation of Dairy Flat and route protection, the Supporting Growth Alliance (Auckland Transport/Waka Kotahi and Council) has lodged 13 Notice of Requirements (NOR) with Auckland Council. There are 13 individual transport projects/NoRs.

### Summary of the 13 NORs for Dairy Flat:

**NoR 1:** New Rapid Transit Corridor between Albany bus station and Milldale via Dairy Flat, including a walking and cycling path.

**NoR 2:** New Rapid Transit Station at Milldale

**NoR 3:** New Rapid Transit Station at Pine Valley Road, including Park n Ride

**NoR 4:** State Highway 1 Improvements – Albany to Ōrewa and Alterations to Existing Designations 6751, 6760, 6759, 6761

**NoR 5:** New State Highway 1 Crossing at Dairy Stream

**NoR 6:** New Connection between Milldale and Grand Drive, Ōrewa

**NoR 7:** Upgrade to Pine Valley Road

**NoR 8:** Upgrade to Dairy Flat Highway between Silverdale and Dairy Flat

**NoR 9:** Upgrade to Dairy Flat Highway between Dairy Flat and Albany

**NoR 10:** Upgrade to Wainui Road

**NoR 11:** New Connection between Dairy Flat Highway and Wilks Road

**NoR 12:** Upgrade and Extension to Bawden Road

**NoR13:** Upgrade to East Coast Road between Silverdale and Redvale

From the 14th of November 2023, the public has 20 days to lodge submissions with the Council (whether supporting, opposing, or seeking changes to the notice of requirements). Submitters can also be heard at a public hearing. The final decision of the hearing can be appealed by the Council or the submitters in the Environment Court.

Approximately 900 homeowners in Dairy Flat are impacted by the NoRs.

With the development of Dairy Flat being pushed out to 2050, many property owners are understandably very concerned about the long duration of the NORs on their property titles. There have also been several concerns raised about the proposed roading projects and RTN being in part in hazardous flood zones, areas of which have flooded three times in 2023.

Many locals are also concerned that with a cash-strapped Council, the proposed RTN going through the most built-up and established lifestyle properties in the most expensive parts of Dairy Flat will significantly increase the cost of the land acquisition required for this project, which may prohibit the RTN from ever being funded. We have seen this happen with many of our large infrastructure projects in Auckland. There is no funding for any of the 13 NOR roading projects.

For submissions/ information on the NORs, please use the following link:

<https://www.aucklandcouncil.govt.nz/plans-projects-policies-reports-bylaws/our-plans-strategies/unitary-plan/auckland-unitary-plan-modifications/notices-of-requirement-to-designate-land/>

## Park at Green Road

For our 154 Hectare Park at Green Road, Dairy Flat, we held an initial working group meeting for the 'Friends of Green Road Park' in October, and we had great representatives from across the community. Last week, the 'Friends of Green Road Park' had a site visit and walked over the park, which took a couple of hours, and we only covered half of it as it is so vast. Much of the farming infrastructure is run down, but the fences are slowly being replaced. The council will install a small car park and bollards to direct park users around the park for this summer. The park is like a regional park, and can be challenging in parts, so please make sure you have good shoes. If you would like to be involved in the friends of Green Road group, please get in touch.

For details on the Master Plan, refer to the below link.

<https://www.aucklandcouncil.govt.nz/about-auckland-council/how-auckland-council-works/local-boards/all-local-boards/rodney-local-board/Documents/green-road-park-masterplan-october-2020.pdf>

### Dairy Flat

**Dairy Flat** is recommended for further investigation. Dairy Flat is not planned to support development before 2050+.

This area is recommended for further investigation due to:

#### Infrastructure

- Transport infrastructure is not planned to support development before 2050+. Rapid transit, frequent transit routes, key arterials and provision of active modes are required to support development and achieve strategic outcomes.
- A Wastewater Treatment Plant upgrade is also required to support development in this area.

#### Urban form and business land retention

- Further consideration is needed to understand the relationship of Dairy Flat to the Silverdale West Industrial Area and the impact any changes might have on planned infrastructure such as rapid transit and potential new local centres.

#### Emissions/VKT reduction

- Potential for higher VKT and CO2 emissions than other FUAs due to Dairy Flat being relatively distant from high quality existing or planned public transport, a wide range of jobs, education and other services compared to other FUAs.

#### Natural hazards

- Moderate hazard constraints, including approximately 16% of the FUA exposed to the 1% AEP flood plain. A moderate proportion of the FUA contain some risks of settlement, and high risk of slope instability.

Aucklanders can have their say on the draft refresh from Tuesday 6 June 2023. The strategy will then go to the Governing Body for adoption later in the year, replacing the 2018 Development Strategy and the 2017 Future Urban Land Supply Strategy. This refresh will have a massive impact on Dairy Flat and as a community we do need to provide feedback.

The Council Initiated Unitary plan change for phase 1 of the industrial zone in Dairy Flat:

This Council initiated unitary plan change to rezone the land identified in phase 1 of the structure plan from future urban to a light industrial zone has been significantly delayed. The last update that we received from Council Planners is that they are continuing to work on the plan change and addressing the issues raised by AT and Waka Kotahi about transport. However, I understand there are number of other issues that are delaying this plan change

coming out for public consultation. Once I know more, I will make sure that the community is informed.

#### The draft spatial land use plan for Dairy Flat.

In August 2022, Council released the draft land use strategy for the future urban zones of Dairy Flat and Silverdale for public feedback. This strategy identified Council's preferred location of a town centre for Dairy Flat near our park at Green Road. Many locals were concerned about this proposal due to the well-known flooding issues. Council planners will not bring this back to the local board until the Future Development strategy is finalised.

#### Supporting growth's integrated transport networks for Dairy Flat

In August of 2022, the supporting growth team comprising of Council, Waka Kotahi and Auckland Transport consulted on the future integrated transport networks for when Dairy Flat is urbanised. This work is proposing big infrastructure projects such as rapid transport networks, motorway interchanges, widening of roads, new cycleways etc. These proposed projects are big ticket items that will cost billions and are currently unfunded. The supporting growth team received 241 submissions and have reviewed the public feedback. Their summary report is online, and I have detailed a couple of key points from the website. 'The Rapid Transit Corridor (RTC) attracted the most feedback. Many people did not support the alignment through the Dairy Flat future growth area due to the impact on property owners, the existing rural environment, floodplains and because it is a less direct route for existing communities. Potentially affected landowners were also concerned by the longer time frames for implementation.'

Supporting growth's response to this feedback stated that 'The alignment along SH1 was investigated as part of the Indicative Business Case. An alignment through the Dairy Flat Urban zone was reconfirmed at the beginning of the Detailed Business Case. We will review flooding information and continue discussions with Auckland Council on the location of the town centre and how it integrates with the RTC.'

The next steps for the supporting growth team, is to write to effected landowners and offer one on one meetings. The outcomes of this investigation and engagement may affect the details of the route and the extent that properties are impacted. Once this work is completed, the detailed business case will be considered by the Auckland Transport and Waka Kotahi Boards. This is currently scheduled for August. The Supporting Growth team will then proceed with the lodgement of a notice of requirement (NOR) with Council, and once publicly notified, the public can lodge submissions with the Council (whether supporting, opposing, or seeking changes to the notice of requirement) these submissions will be heard at a public hearing. The final decision of the hearing can be appealed by Council or the submitters in the Environment Court.

For more detailed information please refer to the Supporting Growth website.

[www.supportinggrowth.govt.nz/growth-areas/north-auckland/](http://www.supportinggrowth.govt.nz/growth-areas/north-auckland/)

## **Our future park at Green Road**

Just a quick update on our 154 Hectare Future Park at Green Road. For those of you that are new to the area, the 154 Hectare farmland was purchased by Rodney Council in the early 2000's for use as a park. From the roadside the farmland is flat paddocks but out the back of the park is rolling hills, established trees and a stream boundary with a small waterfall.

As a community we have developed a master plan for the 154-hectare future park. This masterplan was adopted by the Rodney Local Board in 2020. The 154 hectares of land is now held under the Reserve's Act which means that it will be more difficult for Council to ever sell off. Plans have been completed for a pathway network through the future park. The traffic assessment has identified a possible location for a car park on the Green Road end of the park. The farm, within the Green Road Park footprint is now being operated by the Council farming unit. They are used to operating alongside the public. Many of our regional parks operate with a farming component and a good example of this is Tawharanui regional park. There has been considerable storm damage at our Green Road Park that will need to be repaired and this will be funded regionally. We are currently looking at allocating the remaining 620 K funding from the local board transport targeted rate for a gravel pathway to connect Sunnyside and Green Road via the park. 100 percent of this pathway would be within the park footprint. This pathway would be suitable for both horses and pedestrians etc. In Dairy Flat there are no bridle trails and very limited safe areas for walking and running. It would be great to hear your views on this draft proposal. If this is supported, construction would start relatively soon in Council terms i.e., in 2023/24 year.

As part of the Penlink project, the negative impacts on the environment from construction must be offset by planting at other sites. The Green Road Park is one of the sites that will receive these offset environmental mitigations. This will include planting the thousands of trees, fencing out wetlands and stream boundaries. This is a big win for the park, as Council would never be able to afford to fund this work.

Going forward we need to set up a working group of residents to help drive the Green Road Park forward. It would be great to have nearby neighbours, pony clubs, pest free groups, ratepayer groups, garden clubs involved. I have a number a residents contact me already but please let me know if you would like to be part of this working group. We are looking at scheduling a meeting in August. The opening of the park will not be too much longer away, and it will be this year!

Please get in contact if you have any questions or just want a general chat.

My contact details are: 021 729 739 or [Louise.Johnston@aucklandcouncil.govt.nz](mailto:Louise.Johnston@aucklandcouncil.govt.nz)

# SILVERDALE PONY CLUB

The 2023 /24 season is officially underway at Silverdale Pony Club. Our grounds at Green Road are recovering from the most brutally wet season on record. Fortunately the wet winter hasn't dampened the enthusiasm of our brave and hardy riders! Our young riders group (under 25 years) and adult group are enjoying their first mounted rallies on the grounds after travelling out to Woodhill Sands in Helensville for the last two weeks.

Our first rally mounted rally was well attended and despite the forecast rain, riders were able to enjoy almost two hours of instruction under the watchful eye of their coaches. It is wonderful to see the young riders out enjoying themselves with their pony club friends again.

The set up of the grounds will continue for the next few weeks, in preparation for our annual **Fun Day on Sunday November 26th**. This event usually draws lots of competitors and spectators so please come along to watch the action. With six rings, there is a place for every level rider. If you have your own horse or pony and would like to enjoy a relaxed day with flat work classes, jumping, games, good food and the annual dress up competition, please come along! You do not need to be a member of a pony club to enter and there is no age limit. Please see our website or facebook page for more details.

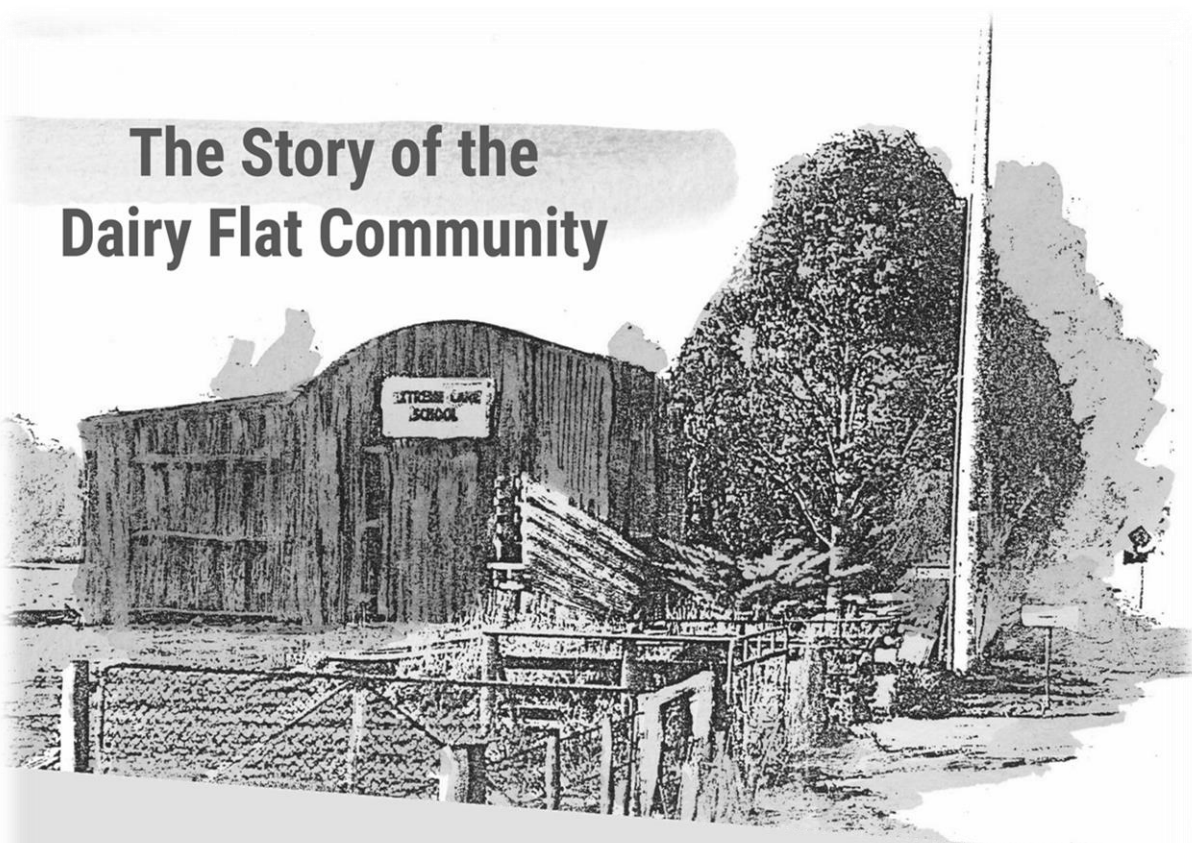
This season our riders will be out and about competing at events ranging from ribbon days, games days, A&P shows, dressage, cowboy challenge, show jumping and eventing. Not to mention simply enjoying the outdoors in our local forests and beaches. Wherever your equestrian interests lay, Silverdale Pony Club caters to all.

Here's to a great 2023/24 season!



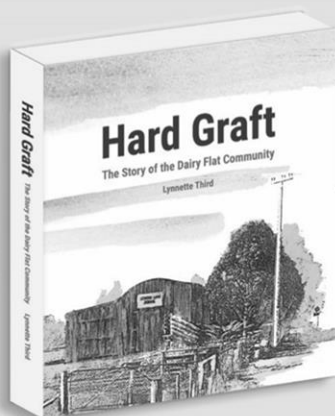


## The Story of the Dairy Flat Community



# Hard Graft

By Lynnette Third



### ORDER YOUR COPY

### Available for \$39 + P&P

Please email or phone the Dairy Flat Community Trust to place your book order.

Please include your name, postal address, postcode,  
contact phone number (optional)

Email: [hardgraft2020@gmail.com](mailto:hardgraft2020@gmail.com)

Phone: Barbara Stubbs 09 420 4094

\$39.00 + \$10.00 p&p (\$49.00 in total) to this account with your name as a reference:

Account Name: Dairy Flat Community Trust

Account Number: 12-3046-0249577-51